

# Cleats for dinghy masts

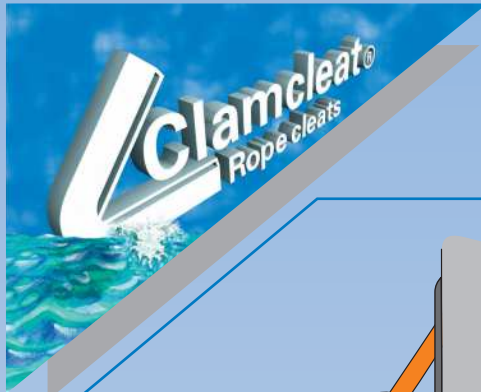
Some of the cleats suitable for use on dinghy masts.  
For 3mm-6mm, 1/8"-1/4" diameter ropes.



*Overleaf are some recommendations and suggestions on how to use our cleats on dinghy masts.*

*For more information, search by cleat number on [www.clamcleat.com](http://www.clamcleat.com)*

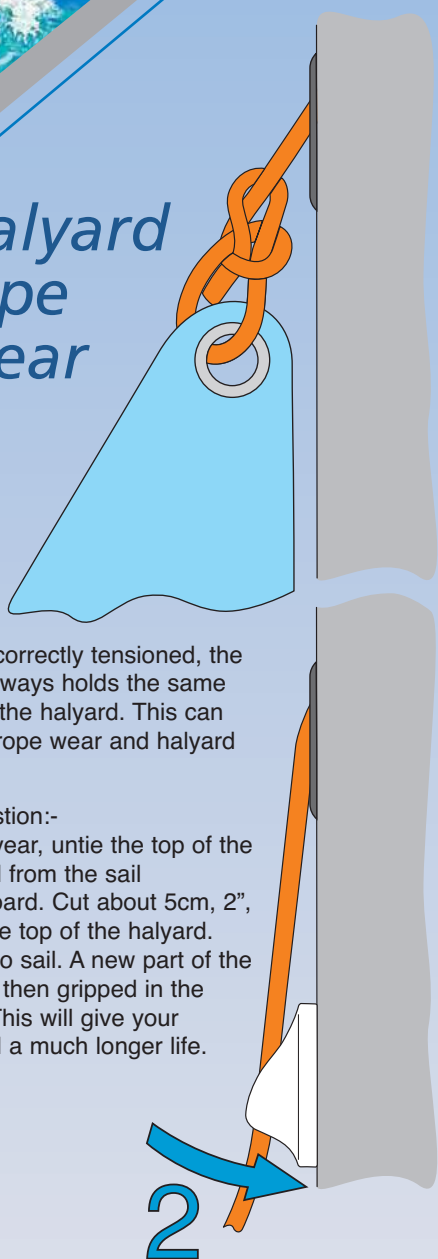
*All these cleats are also available with a hard anodised finish.  
For example CL278 = silver,  
CL278AN = hard anodised.*



# Cleats for dinghy masts

## Ideas and suggestions

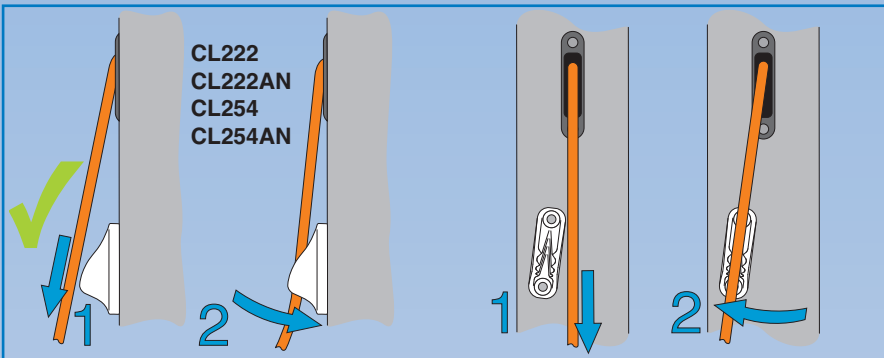
### Halyard rope wear



When correctly tensioned, the cleat always holds the same part of the halyard. This can cause rope wear and halyard slip.

#### Suggestion:-

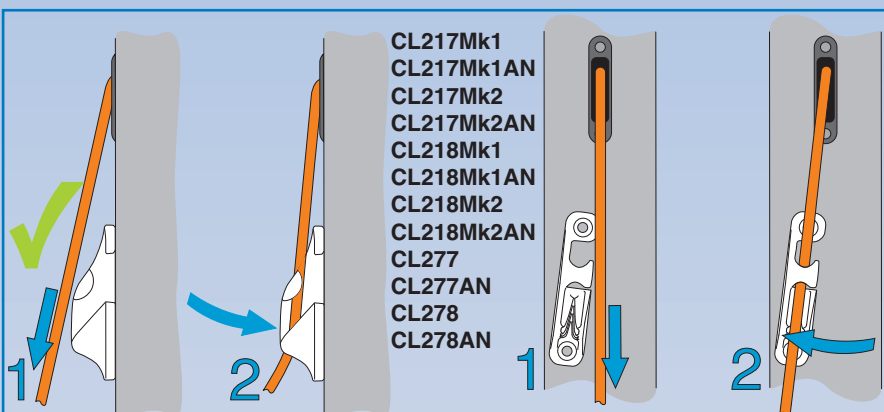
Every year, untie the top of the halyard from the sail headboard. Cut about 5cm, 2", from the top of the halyard. Re-fix to sail. A new part of the rope is then gripped in the cleat. This will give your halyard a much longer life.



CL222  
CL222AN  
CL254  
CL254AN

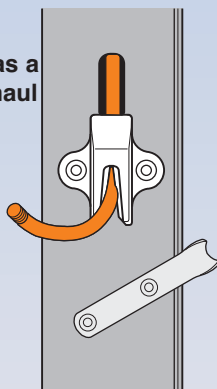
**Always tension the halyard before putting in the cleat.**

Cleat can be fixed slightly off-centre. Tension halyard then move across to cleat.

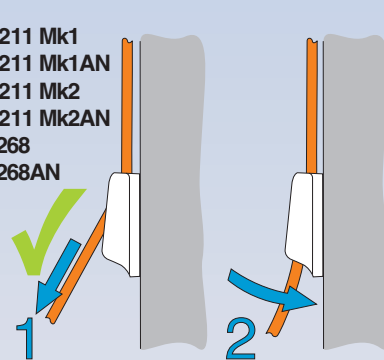


CL217Mk1  
CL217Mk1AN  
CL217Mk2  
CL217Mk2AN  
CL218Mk1  
CL218Mk1AN  
CL218Mk2  
CL218Mk2AN  
CL277  
CL277AN  
CL278  
CL278AN

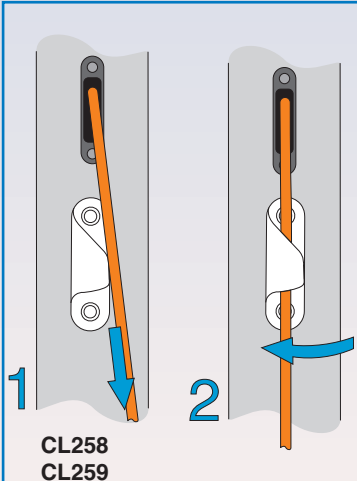
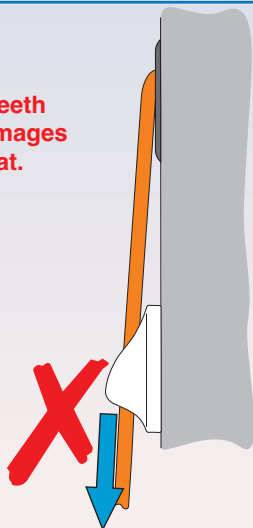
CL255  
Used as a downhaul



CL211 Mk1  
CL211 Mk1AN  
CL211 Mk2  
CL211 Mk2AN  
CL268  
CL268AN

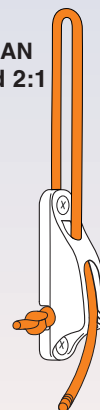


**Pulling the halyard through the cleat's teeth when tensioning damages the rope and the cleat.**



CL258  
CL259

CL704  
CL704AN  
rigged 2:1



CL211 Mk2/S2  
CL211 Mk2/S2AN  
rigged 2:1

